

XT series General Purpose VRLA batteries are designed with AGM(Absorbent Glass Mat) technology. XT series offers 5 years($\leq 20Ah$) and 10 years($\geq 20Ah$) full maintenance free design life. With a compact design and good reliability, this series is highly suited for security and alarm systems, UPS systems, emergency light systems and other small backup applications.

6V Voltage	100Ah Capacity	AGM Technolog	General Purpose
----------------------	--------------------------	-------------------------	---------------------------



Complied standards

- IEC 60896-21/22
- JIS C8704
- GB/T19639

Features and Benefits

- Wide operating temperature range from -15°C to 50°C
- Can be used at vertical or horizontal orientation
- Balanced design for both floating and cyclic operation
- Maintenance-free operation
- Low self-discharge rate and long shelf life

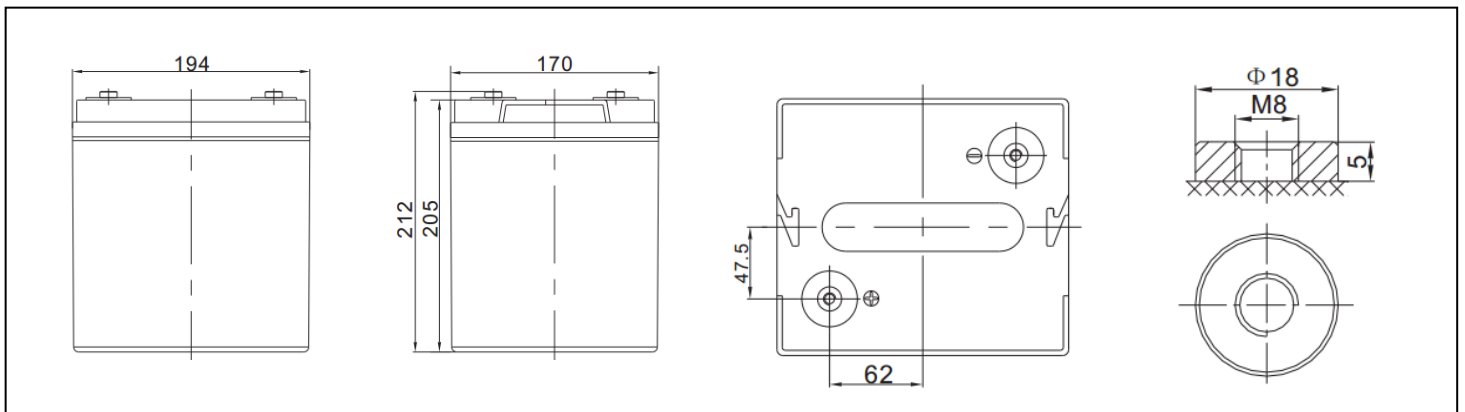
Applications

- Alarm systems
- Communication Equipments
- Control equipments
- Security systems
- Medica Equipments
- UPS systems
- Power tools
- Toys
- Emergency Power Systems
- Photovoltaic Systems
- Security Systems

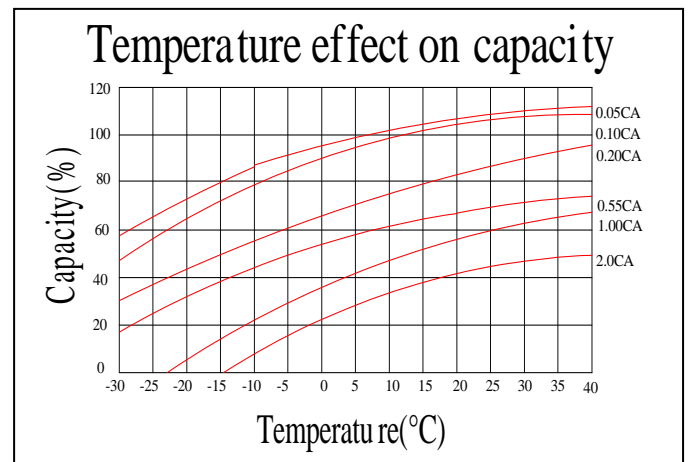
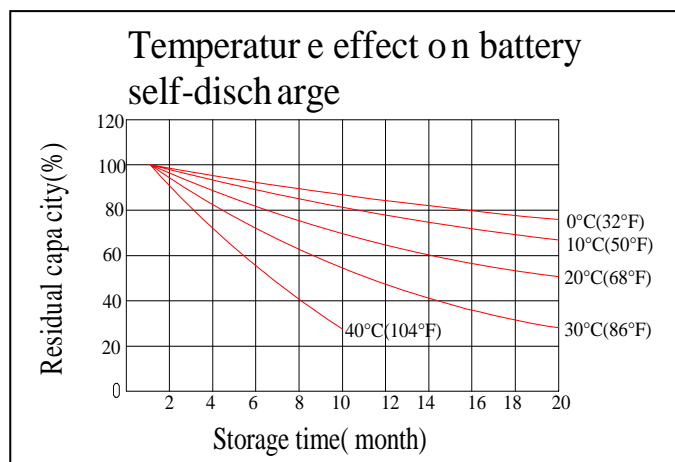
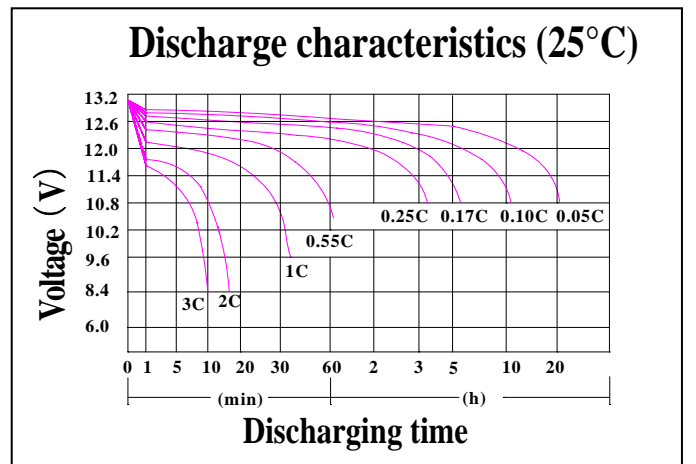
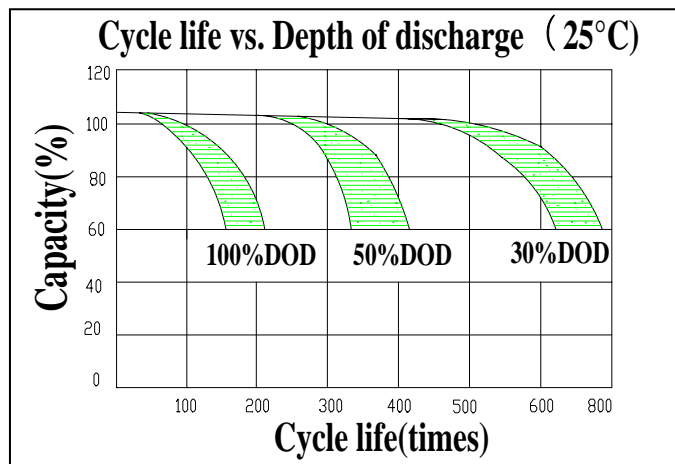
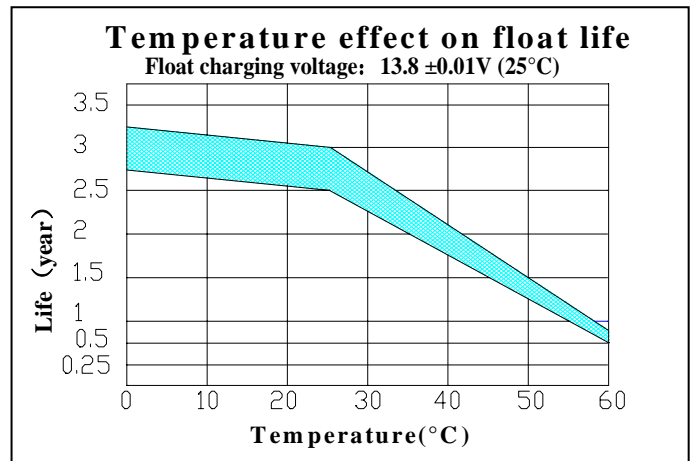
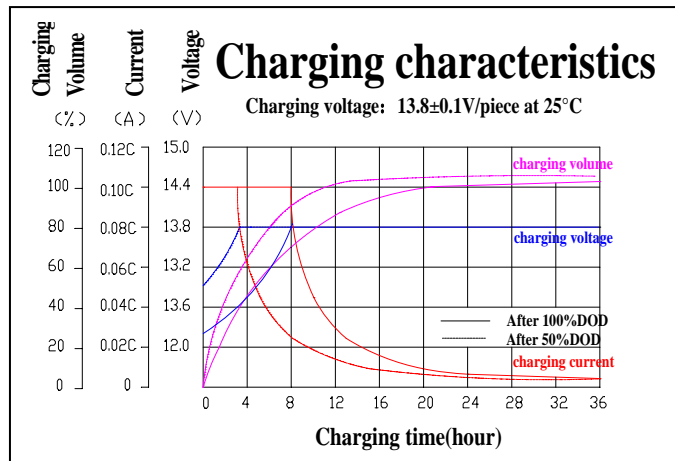
Technical Specifications

Nominal Voltage.....	6V (3 cells per unit)
Nominal Capacity(20°C)	
10hour rate(10A,5.4V).....	100Ah
5hour rate(17.4A,5.25V).....	158.5Ah
1hour rate(62A,4.8V).....	62Ah
Dimension(mm).....	L194 x W170 x H205 x TH212mm
Approx. Weight	16.5kg
Terminal Type.....	M8
Internal Resistance.....	3.7mΩ(fully Charged @20°C)
Max.Charge Current.....	30A
Max.Discharge Current (5s).....	900A
Ambient Temperature	
Discharge.....	-15-45°C
Charge.....	-15-45°C
Storage.....	-15-45°C
Capacity Affected by Temp.(10 hr capacity)	
105% @40°C	
100% @25°C	
85% @0°C	
65% @-15°C	
Self-Discharge @20°C.....	Approx. 3% per month
Charge Voltage @20~25°C	
Float charge voltage.....	6.8V-6.9V
Equalize Charge Voltage.....	7.2V-7.5V

Dimensions



Performance Characteristics



Battery Discharge

Discharge Constant Current per Cell (Amperes at 25°C)

F.V/Time	10min	15in	30min	1h	2h	3h	4h	5h	8h	10h	20h
1.60V	245.6	183.1	106.0	62.2	37.3	27.4	22.2	18.8	12.5	10.7	5.47
1.65V	238.3	178.3	103.6	61.0	36.7	27.0	21.9	18.5	12.4	10.6	5.42
1.70V	228.7	172.0	100.6	59.5	36.0	26.5	21.6	18.3	12.2	10.4	5.36
1.75V	216.3	163.8	96.5	57.5	35.0	25.9	21.1	17.9	12.0	10.2	5.29
1.80V	200.4	153.2	91.3	54.9	33.8	25.0	20.4	17.4	11.7	10.0	5.18
1.85V	180.6	139.9	84.7	51.5	32.1	23.9	19.6	16.7	11.3	9.69	5.05

Discharge Constant Power per Cell (Watts at 25°C)

F.V/Time	10min	15in	30min	1h	2h	3h	4h	5h	8h	10h	20h
1.60V	424	325	195	118	71.7	53.0	43.3	36.7	24.8	21.3	10.9
1.65V	422	323	194	117	71.1	52.7	43.0	36.5	24.7	21.1	10.9
1.70V	410	314	189	115	70.0	51.8	42.4	36.0	24.4	20.9	10.8
1.75V	394	304	184	111	68.4	50.8	41.6	35.3	24.0	20.5	10.6
1.80V	372	288	175	107	66.3	49.3	40.4	34.5	23.4	20.1	10.4
1.85V	341	267	164	101	63.4	47.4	38.9	33.2	22.7	19.5	10.2

Battery Construction

Component	Positive plate	Negative plate	Container & Cover	Safety valve	Terminal	Separator	Electrolyte	Pillar seal
Features	Thick high Sn low Ca grid with special paste	Balanced Pb-Ca grid for improved recombination efficiency	ABS (UL94-V0 optional)	Flame Si-Rubber and aging resister	Female Copper Insert M8(torque: 10~11N.m)	Advanced AGM separator for high pressure cell design	Dilute high purity sulphuric acid	Two layers epoxy resin seal